

# Comfort-Cire®

## 13 SEER HEAT PUMPS FOR R-410A



### HRG13 SERIES 1.5 to 5 Tons



- **Long life copper coils** with enhanced aluminum fins provide maximum heat exchange for greatest efficiency
- **Louvered metal jacket** protects the coil while adding to the attractive appearance
- **Expansion valve** with internal check valve adds reliability
- **Demand defrost** improves efficiency by defrosting only when necessary
- **Non-cycling reverse valve** minimizes operational noise
- **Muffler** on compressor discharge dampens compressor sound
- **Heat pump duty compressors** are designed for long life and efficiency
- **Heavy duty grille** and motor mount contribute to quiet fan operation
- **Three service ports**—liquid, vapor and common—are easily accessed
- **Waterproof control box** is conveniently located for installation and service
- **Durable cabinet** is painted to withstand harsh weather conditions and maintain an attractive appearance
- **Bi-Directional filter-drier** is included, but not installed

**Outstanding Limited Warranty Coverage—12 years compressor, 6 years other parts!**

With registration within 90 days by original owner; other limitations apply: see printed warranty for details.

## HEAT CONTROLLER, INC.

## PERFORMANCE DATA-AHRI STANDARD CONDITIONS-NOMINAL 13 SEER

INDOOR/OUTDOOR UNIT MATCHES			COOLING			HEATING*		AIR FLOW CFM
INDOOR TYPE	OUTDOOR MODEL	INDOOR MODEL	CAPACITY BTUH	EFFICIENCY		CAPACITY BTUH	EFFICIENCY HSPF**	
				EER	SEER*			
<b>AIR HANDLER with ELECTRIC HEAT</b>	HRG1318-1A	HAG24-00-1A	17,600	11.8	13.0	16,600	7.70	600
	HRG1324-1A	HAG24-00-1A	23,600	10.9	13.0	22,600	7.70	800
	HRG1330-1A	HAG36-00-1A	27,000	11.0	13.0	26,000	7.70	1000
	HRG1336-1A	HAG36-00-1A	33,000	11.0	13.0	33,000	7.70	1200
	HRG1342-1A	HAG48-00-1A	40,500	11.0	13.0	39,500	7.70	1400
	HRG1348-1A	HAG48-00-1A	45,500	10.8	13.0	44,500	7.70	1600
	HRG1360-1A	HAG61-00-1A	55,000	10.8	13.0	54,000	7.70	2000
<b>VARIABLE SPEED AIR HANDLER with ELECTRIC HEAT</b>	HRG1318-1A	HAGV24-00-1A	18,000	12.0	14.0	17,000	7.85	600
	HRG1324-1A	HAGV24-00-1A	24,000	12.0	14.0	23,000	7.95	800
	HRG1330-1A	HAGV36-00-1A	29,000	11.9	14.0	28,000	7.90	1000
	HRG1336-1A	HAGV36-00-1A	35,000	12.0	14.0	34,000	7.95	1200
	HRG1342-1A	HAGV48-00-1A	42,000	12.0	14.0	41,500	7.90	1400
	HRG1348-1A	HAGV48-00-1A	48,000	11.7	14.0	46,000	7.90	1600
	HRG1360-1A	HAGV60-00-1A	57,000	10.9	13.0	56,000	7.70	2000

\*47°F DB/43°F WB Outdoor Air  
\*\*DOE Region IV

### LINE SIZES and COMPRESSOR

Model	Connection Size (Inch ODS Female)		Standard Line Size (Inch OD)		Compressor Type
	Liquid	Suction	Liquid	Suction	
HRG1318-1A	3/8	3/4	3/8	3/4	Scroll
HRG1324-1A	3/8	3/4	3/8	3/4	Scroll
HRG1330-1A	3/8	3/4	3/8	3/4	Scroll
HRG1336-1A	3/8	7/8	3/8	7/8	Scroll
HRG1342-1A	3/8	7/8	3/8	7/8	Scroll
HRG1348-1A	3/8	7/8	3/8	1-1/8	Scroll
HRG1360-1A	3/8	7/8	3/8	1-1/8	Scroll

*NOTE: Unit comes charged for 15' line set.*

### MODEL IDENTIFICATION

<b>HR</b>	<b>G</b>	<b>13</b>	<b>18</b>	<b>—</b>	<b>1</b>	<b>A</b>
Heat Pump Series	R-410A	SEER	Nominal Cooling Capacity x 1000		Power 1 = 208/230V-1-60	Revision Level

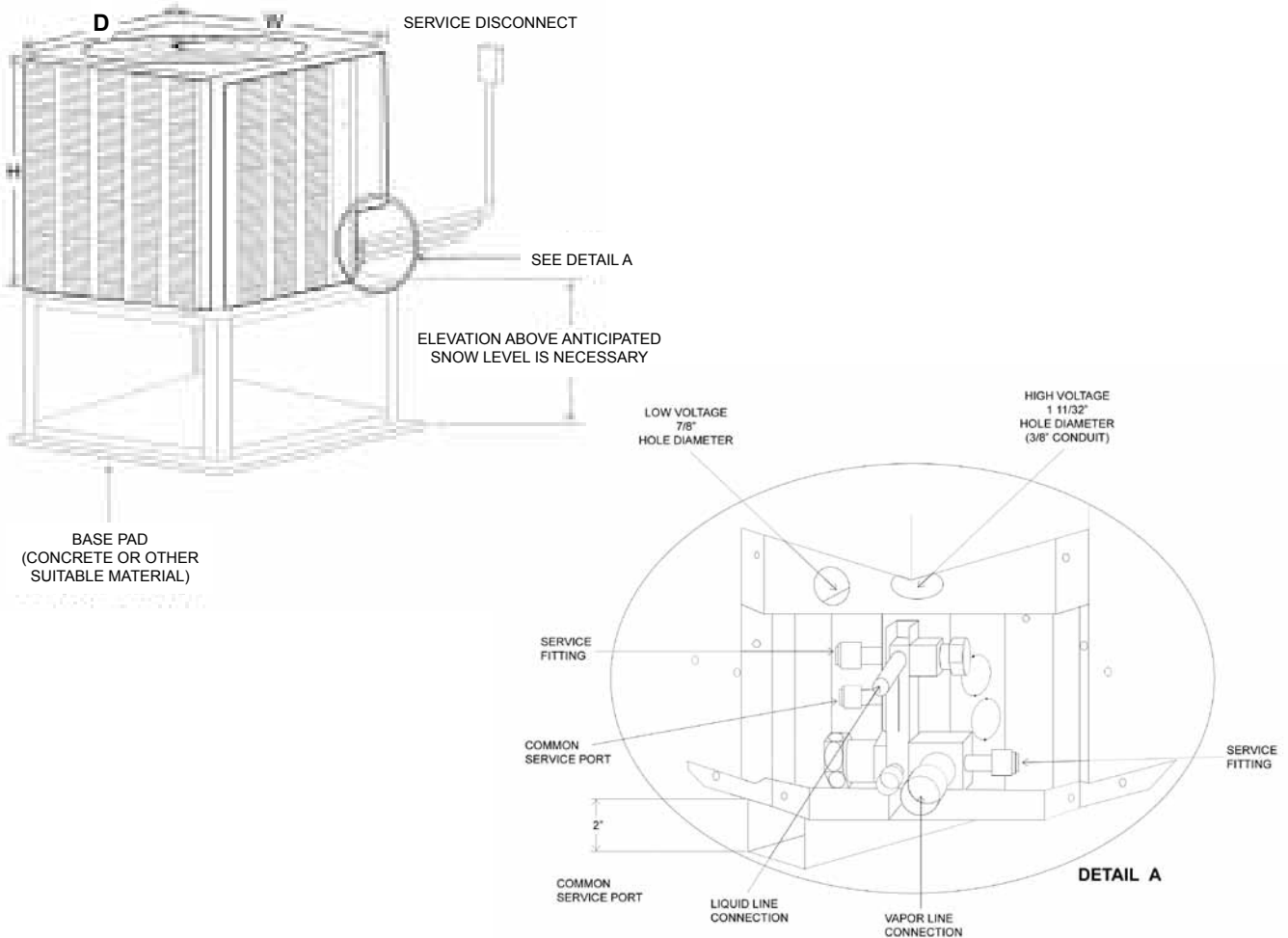
## ELECTRICAL AND PHYSICAL DATA

Model	Power Supply 60 Hz	Compressor		Fan Motor Full Load Amps (FLA)	Min. Circuit Ampacity	Max. Fuse or HACR Circuit Breaker	Outdoor Coil			R-410A Oz.	Weight	
		Rated Load Amps (RLA)	Locked Rotor Amps (LRA)				Face Area Sq. Ft.	No. Rows	CFM		Net Lbs.	Ship Lbs.
HRG1318-1A	208/230V-1	9.0/9.0	41	0.6	12	20	11.06	1	1700	81	142	150
HRG1324-1A	208/230V-1	14.1/14.1	54	0.8	19	30	13.72	1	2370	99	180	190
HRG1330-1A	208/230V-1	14.6/14.6	67	0.8	20	30	16.39	1	2800	115	210	222
HRG1336-1A	208/230V-1	18.0/18.0	83	1.2	24	40	21.85	1	3575	134	224	236
HRG1342-1A	208/230V-1	19.2/19.2	105	1.2	26	40	21.85	1	3575	150	214	226
HRG1348-1A	208/230V-1	26.1/26.1	137	1.2	34	50	21.85	1	3575	154	220	232
HRG1360-1A	208/230V-1	25.3/25.3	150	1.2	33	50	21.85	2	3365	256	283	295

**NOTE:** Factory charged for 15' line set.

## UNIT DIMENSIONS

Model Number	Height "H" (inches)	Depth "D" (inches)	Width "W" (inches)
HRG1318	26-1/4	23-5/8	23-5/8
HRG1324	26-1/4	27-5/8	27-5/8
HRG1330	27-3/8	31-5/8	31-5/8
HRG1336/1342/1348/1360	35-5/8	31-5/8	31-5/8



*Design, specifications, performance data and materials subject to change without notice.*

## HEAT CONTROLLER, INC.

1900 Wellworth Ave., Jackson, Michigan 49203 • Ph. 517-787-2100 • Fax 517-787-9341

[www.heatcontroller.com](http://www.heatcontroller.com)

**THE QUALITY LEADER IN CONDITIONING AIR**