

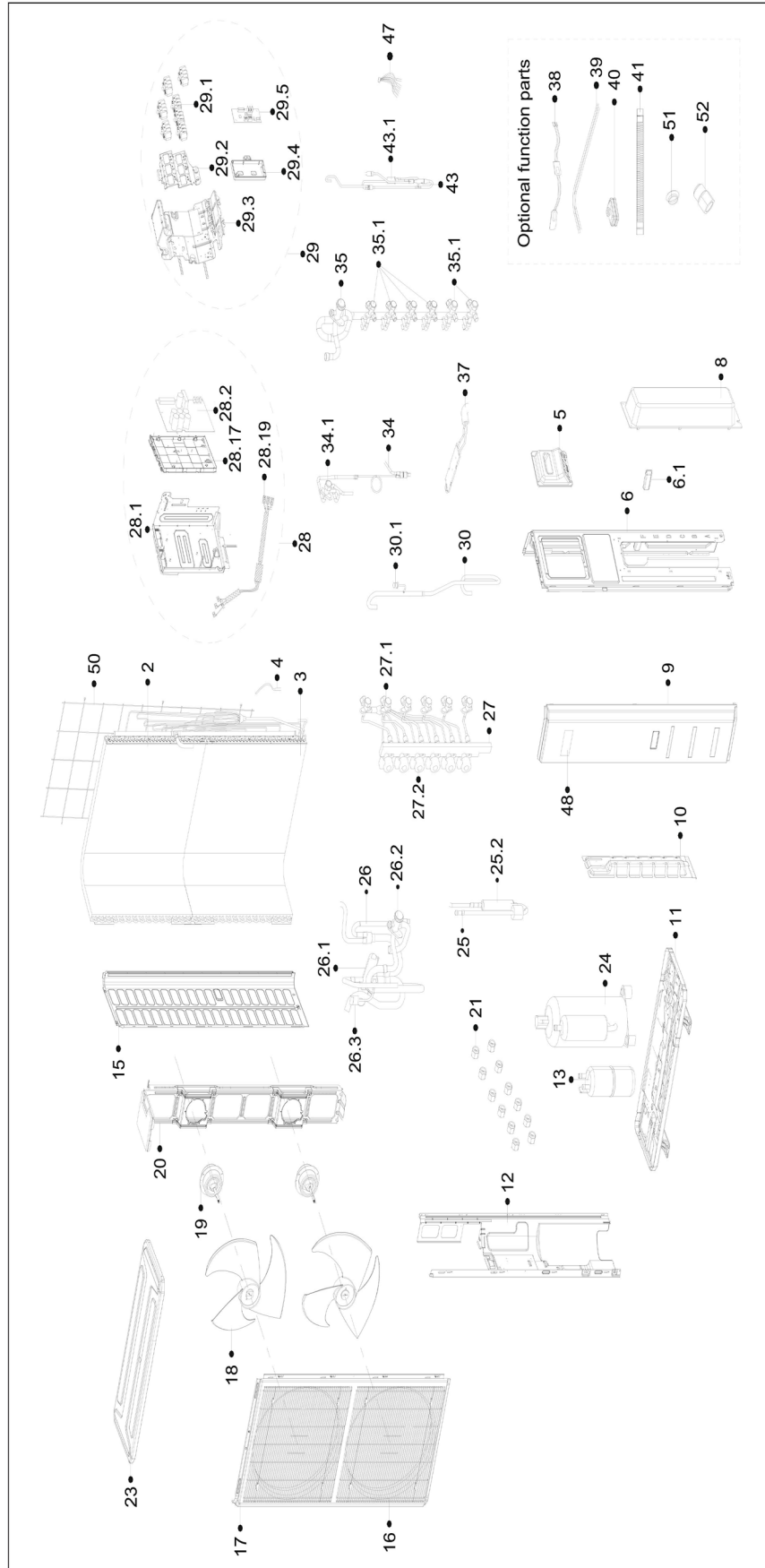


REPLACEMENT PARTS LIST

**Inverter Multi Zone Outdoor
Ductless Mini Split**

A-VHP556SA-1

EXPLODED VIEW



REPLACEMENT PARTS

Location	Part Name	Quantity	Part No.
2	Condenser assembly(Up)	1.0	15822000015366
3	Condenser assembly(Down)	1.0	15822000015087
4	Pipe temperature sensor	1.0	11201007008103
4	Pipe temperature sensor	1.0	11201007007803
5	Handle assembly	1.0	12222000018396
6	rear right side plate assembly	1.0	12222000019406
6.1	Handle	1.0	12100702000038
8	Water collector	1.0	12122000014341
9	Front clapboard assembly	1.0	12222000006287
10	Valve plate	1.0	12222000019405
11	Fixing plate on chassis	1.0	12222000013910
12	Partition board subassembly	1.0	12222000019388
13	accumulator cylinder	1.0	15500508001475
15	Left supporter	1.0	12222200002363
16	Air outlet grille	2.0	12222000014845
17	Front panel	1.0	12222000007564
18	axial flow fan	2.0	12100105000022
19	Outdoor fan motor	2.0	11002015019452
20	Motor bracket assembly	1.0	12222000016092
21	Copper nut	6.0	15500406000016
21	Copper nut	2.0	15500406000012
21	Copper nut	4.0	15500406000010
23	Top cover assembly	1.0	12222200008695
24	compressor	1.0	11103020015084
25	compressor discharge pipe subassembly	1.0	15122000034305
25.1	Pressure switch	1.0	17400516000851
26	4-ways valve or Gas valve assembly	1.0	15422000025795
26.1	4-way valve	1.0	15500216002543
26.2	Gas valve	1.0	15500204000664
27	High pressure valve subassembly	1.0	15422000025723
27.1	High pressure valve	6.0	15500208000028
27.2	Electronic expansion valve	6.0	11501020000341
28	Electronic control box subassembly	1.0	17222000043555
28.1	Electrical installation plate assembly	1.0	12222000019387
28.2	Outdoor main control board subassembly	1.0	17122000063245
28.17	Electronic installing box	1.0	12122000032939
28.19	compressor connection cable	1.0	17401203022090
29	Electronic control box terminal board assembly	1.0	17222000043444
29.1	Terminal block	1.0	17400401006516
29.1	Terminal block	6.0	17400401006029
29.2	Terminal board assembly	1.0	12222000018690
29.3	Terminal board assembly	1.0	12222300000869
29.4	Electronic installing box	1.0	12122000032940
29.5	Key board subassembly	1.0	17122000062856
30	compressor suction pipe subassembly	1.0	15122000034287
30.1	Pressure switch	1.0	17400516000009
34	High pressure valve assembly	1.0	15422000025722
34.1	High pressure valve	1.0	15500208000047
35	Gas valve assembly	1.0	15422000027103
35.1	Gas valve	2.0	15500204000667
35.1	Gas valve	4.0	15500204000665
36	heat exchanger assembly	1.0	15700101001936
36.1	Electronic expansion valve subassembly	1.0	15422000025748
37	Radiator subassembly	1.0	15122000034301
38	compressor electric heater	1.0	17402001000602
39	Electric heater of chassis	1.0	17402002000466
43	Electronic expansion valve subassembly	1.0	15422000025745
43.1	Electronic expansion valve	1.0	15500213002689
47	Combination Sensor	1.0	11201011001207
48	Trademark	1.0	16000201001228
50	Rear Grille	1.0	12222000007944
52	transfer connector	2.0	15500303002547
52	transfer connector	2.0	15500303002546
52	transfer connector	1.0	15500303002545
52	transfer connector	2.0	15500303002544

Due to ongoing product improvements, specifications and dimensions are subject to change and correction without notice or incurring obligations. Determining the application and suitability for use of any product is the responsibility of the installer. Additionally, the installer is responsible for verifying dimensional data on the actual product prior to beginning any installation preparations.

Incentive and rebate programs have precise requirements as to product performance and certification. All products meet applicable regulations in effect on date of manufacture; however, certifications are not necessarily granted for the life of a product. Therefore, it is the responsibility of the applicant to determine whether a specific model qualifies for these incentive/rebate programs.

Comfort-Cire® **Century**®

1900 Wellworth Avenue • Jackson, MI 49203 • 517-787-2100