

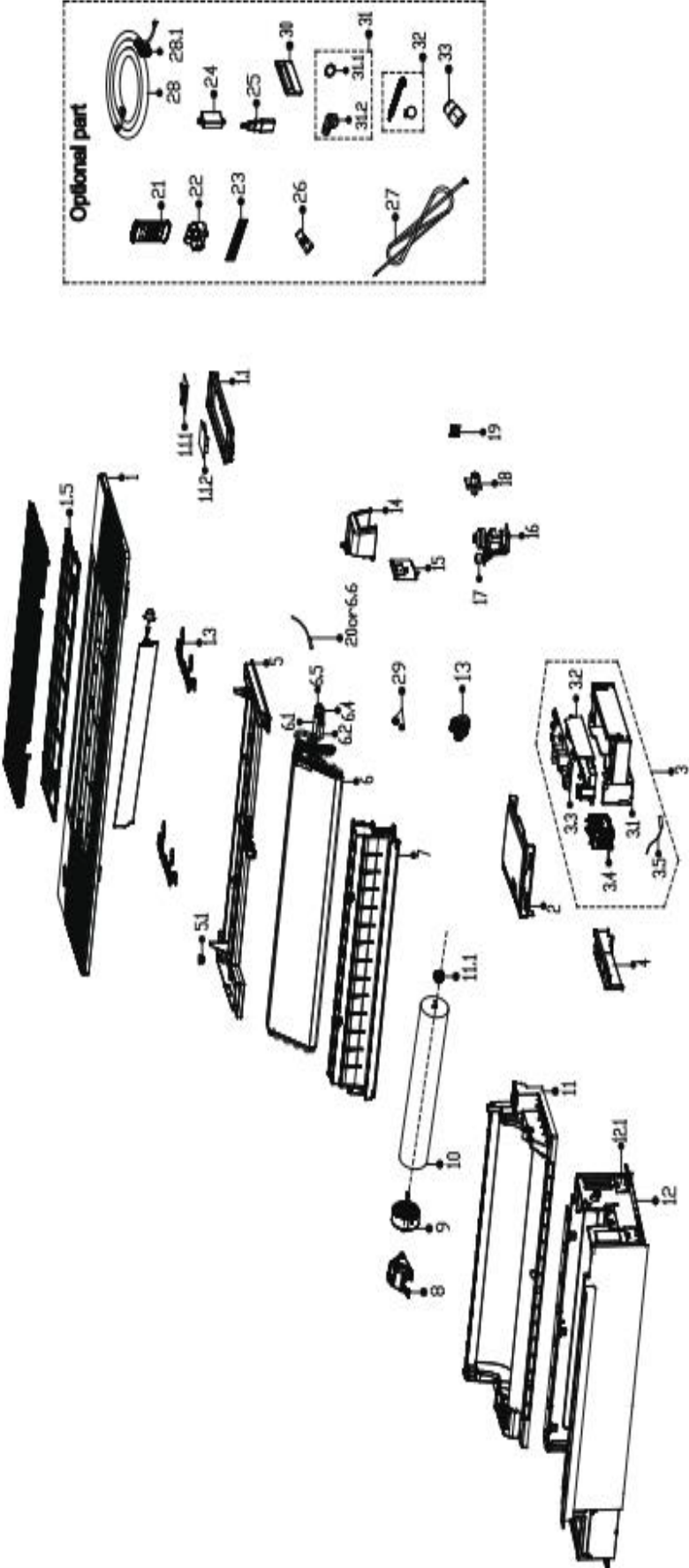


REPLACEMENT PARTS LIST

## **1-WAY CEILING CASSETTE**

B-VHP061A-1

# EXPLODED VIEW



## REPLACEMENT PARTS

Location	Part Name	Quantity	Part No.
1	Panel assembly	1.0	12122500A28405
1.1	Display box assembly	1.0	17222500A04797
1.1.1	Display board assembly	1.0	17122500004112
1.1.2	adapter board subassembly	1.0	17122500005091
1.3	locked button board	2.0	12222500002492
1.5	Air filter	1.0	12122500002707
2	Cover of electronic control box	1.0	12222500002474
3	Structural components of indoor electric control box	1.0	17222500004747
3.1	Cover of electronic control box	1.0	12222500002452
3.2	Insulation plate	1.0	12122500002567
3.3	Indoor main control board subassembly	1.0	17122500005992
3.4	Power switch	1.0	17400519000448
3.5	Ambient temperature sensor subassembly	1.0	11201007003448
4	cover of switch box	1.0	12222500002412
5	Water collector assembly	1.0	12122500002588
5.1	Drain plug	1.0	12600801000903
6	evaporator assembly	1.0	15822500002839
6.1	evaporator outlet pipe subassembly	1.0	15122500003976
6.2	evaporator inlet pipe subassembly	1.0	15122500004076
6.4	Detection valve	1.0	15500209000001
6.5	Copper nut	1.0	15500404000002
6.6	Pipe temperature sensor subassembly	1.0	11201007003437
7	Air outlet assembly	1.0	12122500002587
8	Cover, fan motor	1.0	12122000031622
9	Asynchronous motor	1.0	11002015016793
10	Cross flow fan	1.0	12100102000936
11	Air duct assembly	1.0	12122500002607
11.1	bearing base assembly	1.0	12622000000131
12	Chassis assembly	1.0	12222500002413
12.1	Hook	4.0	12223000012927
13	Gas sensor	1.0	11201003000344
14	Water collector	1.0	12122500002647
15	Pipe clamp board subassembly	1.0	12223000015688
16	hood pump subassembly	1.0	17400802003633
17	Water level switch	1.0	17400511001344
18	Drain pipe	1.0	12100510000021
19	Humidity sensor subassembly	1.0	17122000058071
21	remote controller	1.0	17317000012078
29	Copper nut	1.0	15500406000016
29	Copper nut	1.0	15500406000010
32	Accessory kit	1.0	12011600A00310

---

Due to ongoing product improvements, specifications and dimensions are subject to change and correction without notice or incurring obligations. Determining the application and suitability for use of any product is the responsibility of the installer. Additionally, the installer is responsible for verifying dimensional data on the actual product prior to beginning any installation preparations.

Incentive and rebate programs have precise requirements as to product performance and certification. All products meet applicable regulations in effect on date of manufacture; however, certifications are not necessarily granted for the life of a product. Therefore, it is the responsibility of the applicant to determine whether a specific model qualifies for these incentive/rebate programs.

*Comfort-Aire*®  **Century**®

1900 Wellworth Avenue • Jackson, MI 49203 • 517-787-2100

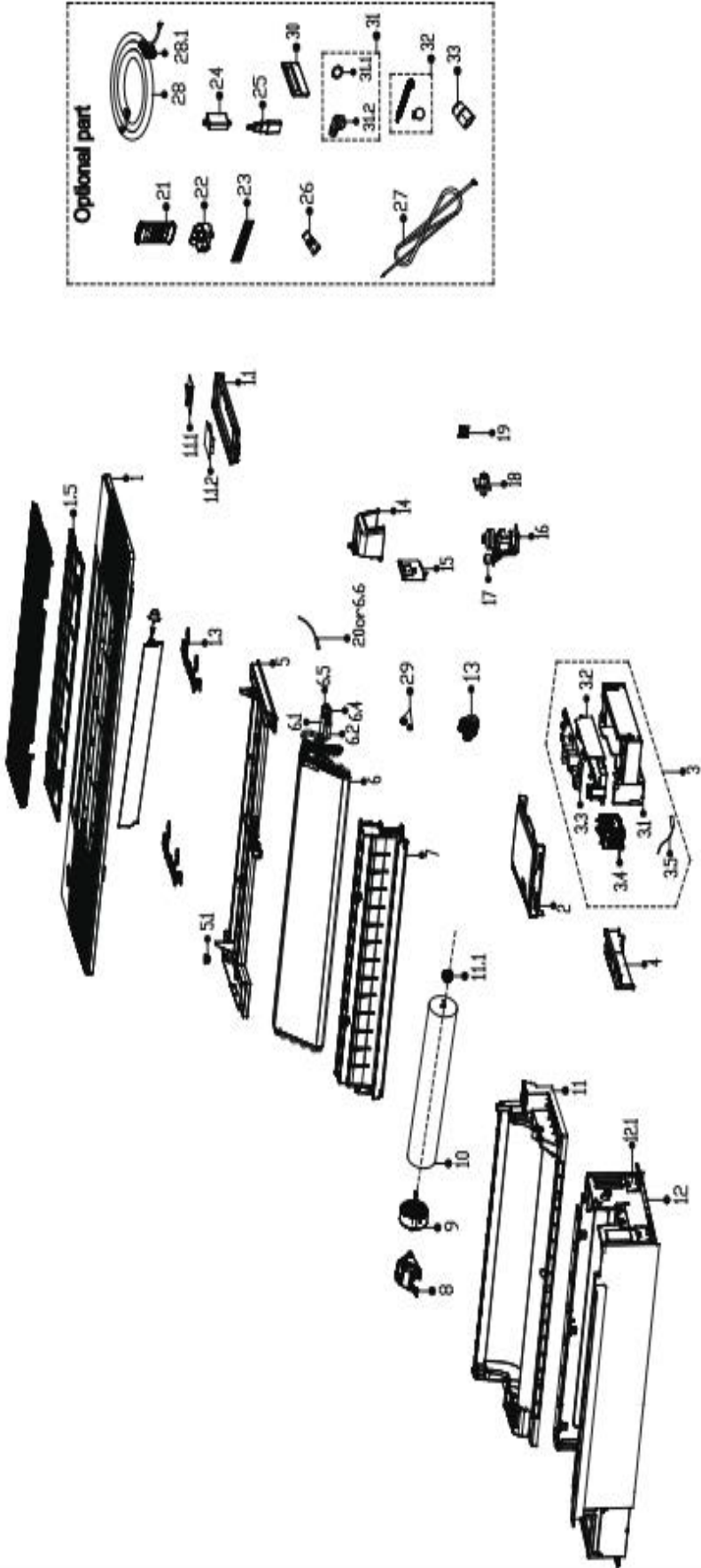


REPLACEMENT PARTS LIST

## **1-WAY CEILING CASSETTE**

B-VHP091A-1

# EXPLODED VIEW



## REPLACEMENT PARTS

Location	Part Name	Quantity	Part No.
1	Panel assembly	1.0	12122500A28405
1.1	Display box assembly	1.0	17222500A04797
1.1.1	Display board assembly	1.0	17122500004112
1.1.2	adapter board subassembly	1.0	17122500005091
1.3	locked button board	2.0	12222500002492
1.5	Air filter	1.0	12122500002707
2	Cover of electronic control box	1.0	12222500002474
3	Structural components of indoor electric control box	1.0	17222500004765
3.1	Cover of electronic control box	1.0	12222500002452
3.2	Insulation plate	1.0	12122500002567
3.3	Indoor main control board subassembly	1.0	17122500005971
3.4	Power switch	1.0	17400519000448
3.5	Ambient temperature sensor subassembly	1.0	11201007003448
4	cover of switch box	1.0	12222500002412
5	Water collector assembly	1.0	12122500002588
5.1	Drain plug	1.0	12600801000903
6	evaporator assembly	1.0	15822500002839
6.1	evaporator outlet pipe subassembly	1.0	15122500003976
6.2	evaporator inlet pipe subassembly	1.0	15122500004076
6.4	Detection valve	1.0	15500209000001
6.5	Copper nut	1.0	15500404000002
6.6	Pipe temperature sensor subassembly	1.0	11201007003437
7	Air outlet assembly	1.0	12122500002587
8	Cover, fan motor	1.0	12122000031622
9	Asynchronous motor	1.0	11002015016793
10	Cross flow fan	1.0	12100102000936
11	Air duct assembly	1.0	12122500002607
11.1	bearing base assembly	1.0	12622000000131
12	Chassis assembly	1.0	12222500002413
12.1	Hook	4.0	12223000012927
13	Gas sensor	1.0	11201003000344
14	Water collector	1.0	12122500002647
15	Pipe clamp board subassembly	1.0	12223000015688
16	hood pump subassembly	1.0	17400802003633
17	Water level switch	1.0	17400511001344
18	Drain pipe	1.0	12100510000021
19	Humidity sensor subassembly	1.0	17122000058071
21	remote controller	1.0	17317000012078
29	Copper nut	1.0	15500406000016
29	Copper nut	1.0	15500406000010
32	Accessory kit	1.0	12011600A00310

---

Due to ongoing product improvements, specifications and dimensions are subject to change and correction without notice or incurring obligations. Determining the application and suitability for use of any product is the responsibility of the installer. Additionally, the installer is responsible for verifying dimensional data on the actual product prior to beginning any installation preparations.

Incentive and rebate programs have precise requirements as to product performance and certification. All products meet applicable regulations in effect on date of manufacture; however, certifications are not necessarily granted for the life of a product. Therefore, it is the responsibility of the applicant to determine whether a specific model qualifies for these incentive/rebate programs.



1900 Wellworth Avenue • Jackson, MI 49203 • 517-787-2100

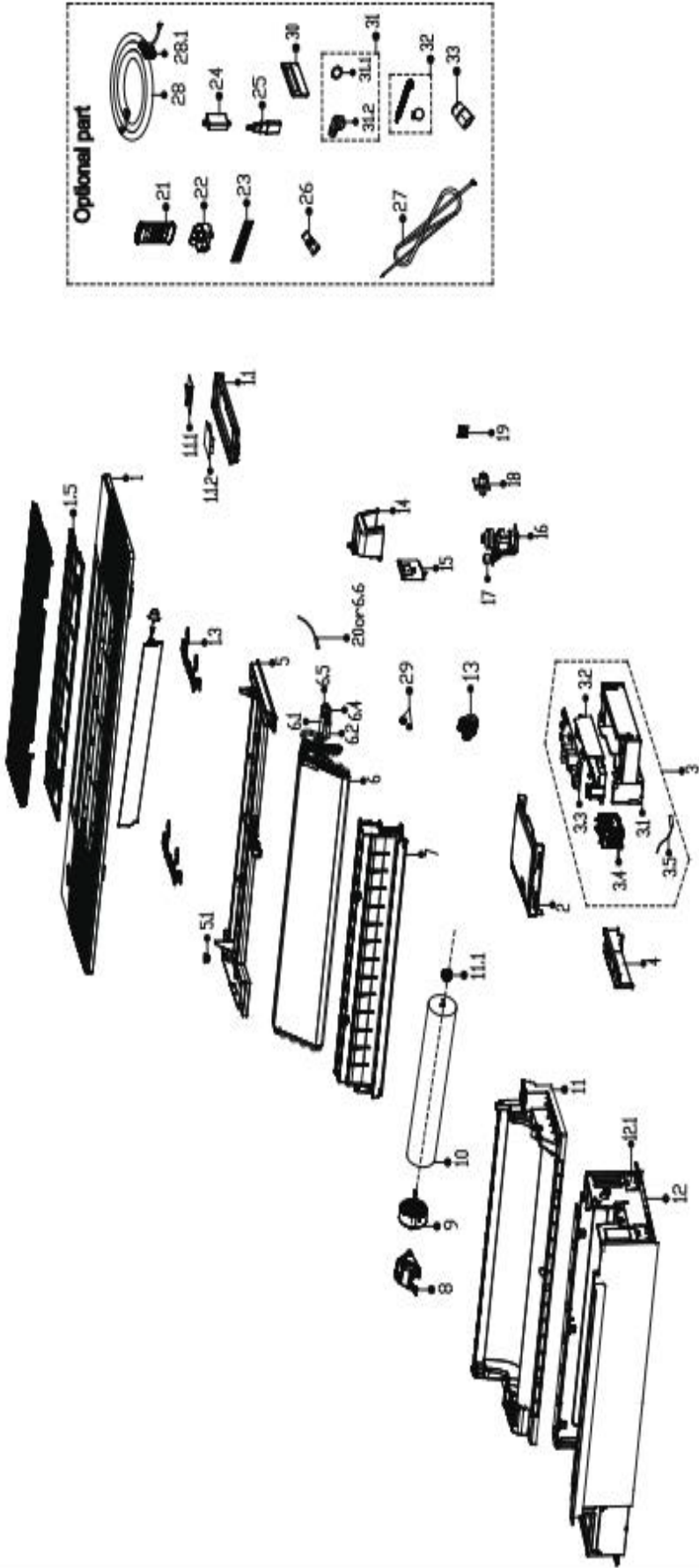


REPLACEMENT PARTS LIST

## **1-WAY CEILING CASSETTE**

B-VHP121A-1

# EXPLODED VIEW



## REPLACEMENT PARTS

Location	Part Name	Quantity	Part No.
1	Panel assembly	1.0	12122500A28405
1.1	Display box assembly	1.0	17222500A04797
1.1.1	Display board assembly	1.0	17122500004112
1.1.2	adapter board subassembly	1.0	17122500005091
1.3	locked button board	2.0	12222500002492
1.5	Air filter	1.0	12122500002707
2	Cover of electronic control box	1.0	12222500002474
3	Structural components of indoor electric control box	1.0	17222500004745
3.1	Cover of electronic control box	1.0	12222500002452
3.2	Insulation plate	1.0	12122500002567
3.3	Indoor main control board subassembly	1.0	17122500005991
3.4	Power switch	1.0	17400519000448
3.5	Ambient temperature sensor subassembly	1.0	11201007003448
4	cover of switch box	1.0	12222500002412
5	Water collector assembly	1.0	12122500002588
5.1	Drain plug	1.0	12600801000903
6	evaporator assembly	1.0	15822500002839
6.1	evaporator outlet pipe subassembly	1.0	15122500003976
6.2	evaporator inlet pipe subassembly	1.0	15122500004076
6.4	Detection valve	1.0	15500209000001
6.5	Copper nut	1.0	15500404000002
6.6	Pipe temperature sensor subassembly	1.0	11201007003437
7	Air outlet assembly	1.0	12122500002587
8	Cover, fan motor	1.0	12122000031622
9	Asynchronous motor	1.0	11002015016793
10	Cross flow fan	1.0	12100102000936
11	Air duct assembly	1.0	12122500002607
11.1	bearing base assembly	1.0	12622000000131
12	Chassis assembly	1.0	12222500002413
12.1	Hook	4.0	12223000012927
13	Gas sensor	1.0	11201003000344
14	Water collector	1.0	12122500002647
15	Pipe clamp board subassembly	1.0	12223000015688
16	hood pump subassembly	1.0	17400802003633
17	Water level switch	1.0	17400511001344
18	Drain pipe	1.0	12100510000021
19	Humidity sensor subassembly	1.0	17122000058071
21	remote controller	1.0	17317000012078
29	Copper nut	1.0	15500406000016
29	Copper nut	1.0	15500406000010
32	Accessory kit	1.0	12011600A00310

---

Due to ongoing product improvements, specifications and dimensions are subject to change and correction without notice or incurring obligations. Determining the application and suitability for use of any product is the responsibility of the installer. Additionally, the installer is responsible for verifying dimensional data on the actual product prior to beginning any installation preparations.

Incentive and rebate programs have precise requirements as to product performance and certification. All products meet applicable regulations in effect on date of manufacture; however, certifications are not necessarily granted for the life of a product. Therefore, it is the responsibility of the applicant to determine whether a specific model qualifies for these incentive/rebate programs.



1900 Wellworth Avenue • Jackson, MI 49203 • 517-787-2100

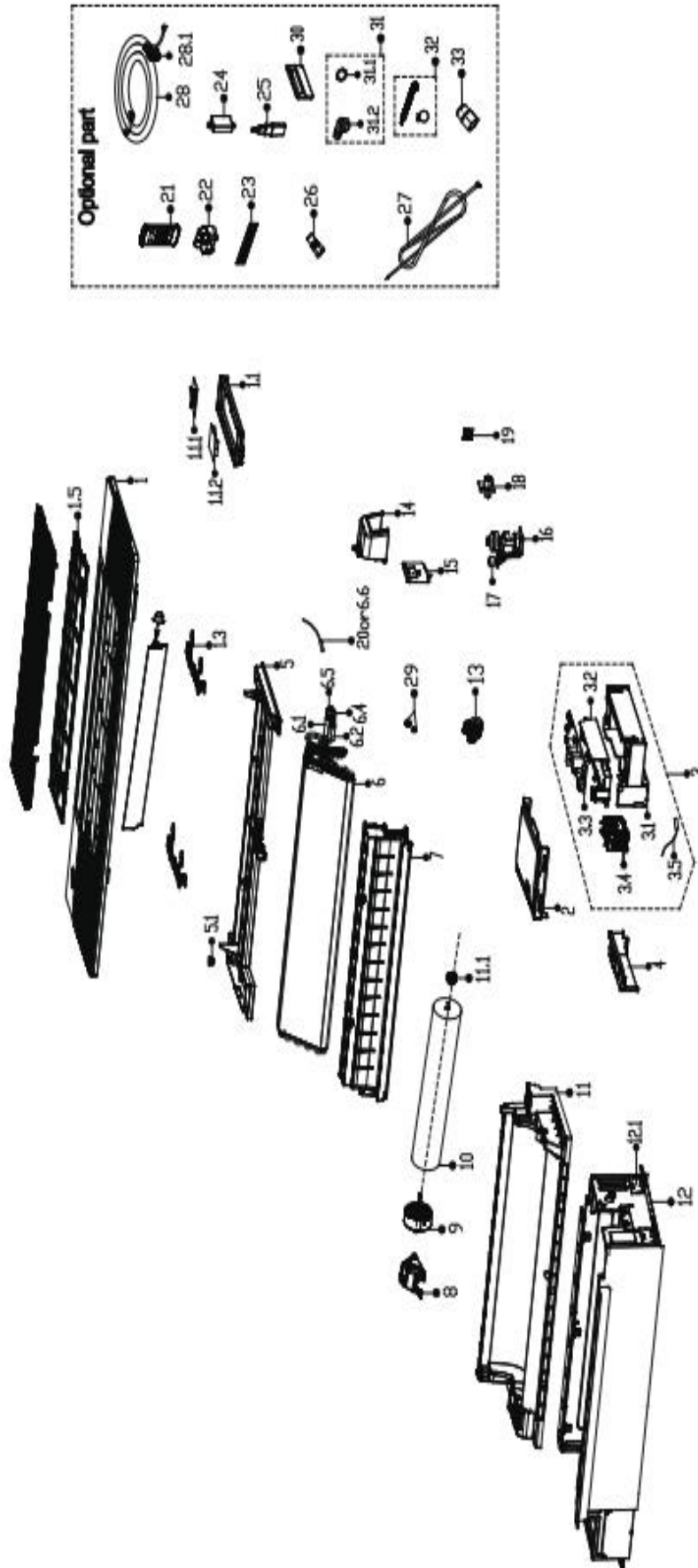


REPLACEMENT PARTS LIST

## **1-WAY CELING CASSETTE**

B-VHP181A-1

# EXPLODED VIEW



## REPLACEMENT PARTS

Location	Part Name	Quantity	Part No.
1	Panel assembly	1.0	12122500A28405
1.1	Display box assembly	1.0	17222500A04797
1.1.1	Display board assembly	1.0	17122500004112
1.1.2	adapter board subassembly	1.0	17122500005091
1.3	locked button board	2.0	12222500002492
1.5	Air filter	1.0	12122500002707
2	Cover of electronic control box	1.0	12222500002474
3	Structural components of indoor electric control box	1.0	17222500004746
3.1	Cover of electronic control box	1.0	12222500002452
3.2	Insulation plate	1.0	12122500002567
3.3	Indoor main control board subassembly	1.0	17122500005931
3.4	Power switch	1.0	17400519000448
3.5	Ambient temperature sensor subassembly	1.0	11201007003448
4	cover of switch box	1.0	12222500002412
5	Water collector assembly	1.0	12122500002588
5.1	Drain plug	1.0	12600801000903
6	evaporator assembly	1.0	15822500002819
6.1	evaporator outlet pipe subassembly	1.0	15122500003576
6.2	evaporator inlet pipe subassembly	1.0	15122500004076
6.4	Detection valve	1.0	15500209000001
6.5	Copper nut	1.0	15500404000009
6.6	Pipe temperature sensor subassembly	1.0	11201007003437
7	Air outlet assembly	1.0	12122500002587
8	Cover, fan motor	1.0	12122000031622
9	Asynchronous motor	1.0	11002015016793
10	Cross flow fan	1.0	12100102000936
11	Air duct assembly	1.0	12122500002607
11.1	bearing base assembly	1.0	12622000000131
12	Chassis assembly	1.0	12222500002413
12.1	Hook	4.0	12223000012927
13	Gas sensor	1.0	11201003000344
14	Water collector	1.0	12122500002647
15	Pipe clamp board subassembly	1.0	12223000015688
16	hood pump subassembly	1.0	17400802003633
17	Water level switch	1.0	17400511001344
18	Drain pipe	1.0	12100510000021
19	Humidity sensor subassembly	1.0	17122000058071
21	remote controller	1.0	17317000012078
29	Copper nut	1.0	15500406000016
29	Copper nut	1.0	15500406000012
32	Accessory kit	1.0	12011600A00310

---

Due to ongoing product improvements, specifications and dimensions are subject to change and correction without notice or incurring obligations. Determining the application and suitability for use of any product is the responsibility of the installer. Additionally, the installer is responsible for verifying dimensional data on the actual product prior to beginning any installation preparations.

Incentive and rebate programs have precise requirements as to product performance and certification. All products meet applicable regulations in effect on date of manufacture; however, certifications are not necessarily granted for the life of a product. Therefore, it is the responsibility of the applicant to determine whether a specific model qualifies for these incentive/rebate programs.



1900 Wellworth Avenue • Jackson, MI 49203 • 517-787-2100