

---

*Comfort-Aire*®

 **Century**®

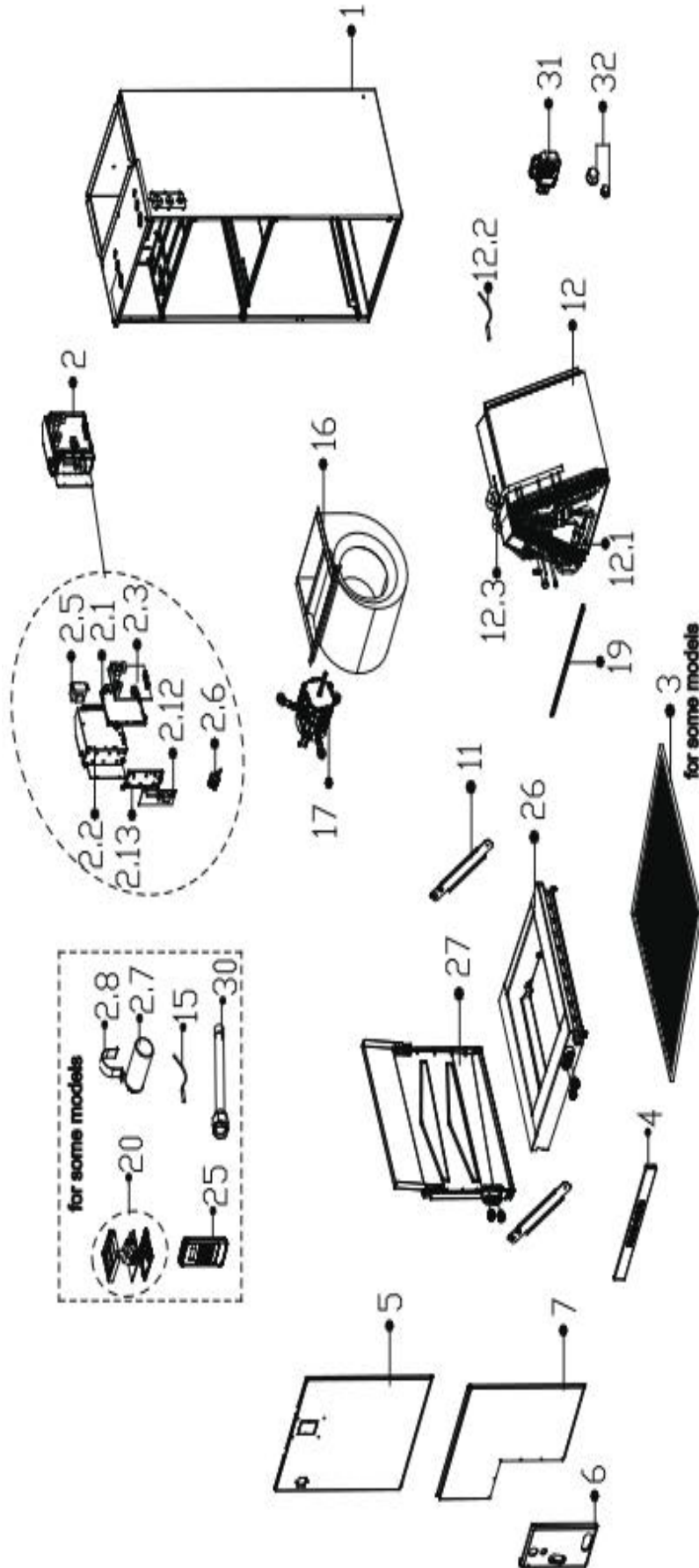
---

REPLACEMENT PARTS LIST

**MULTI-POSITION AIR HANDLER**

B-VHP18AA-1

# EXPLODED VIEW



## REPLACEMENT PARTS

Location	Part Name	Quantity	Part No.
1	Chassis assembly	1.0	12223100000893
2	Structural components of indoor electric control box	1.0	17223000012548
2.1	Electrical installation plate	1.0	12123000000920
2.2	Electric control board mounting panel Subassembly	1.0	12223100000876
2.3	main control board assembly	1.0	17123000014195
2.5	Transformer	1.0	11203103002799
2.6	Terminal block	1.0	17400401000097
2.12	Data transfer model control assembly	1.0	17122000065528
2.13	Electronic installing box	1.0	12100801000401
4	Air filter shutter	1.0	12223100000654
5	Upside board subassembly	1.0	12223100000892
6	Cover board assembly	1.0	12223100001892
7	Underside board assembly	1.0	12223100001912
11	Fixing board of water collector	2.0	12223100001471
12	evaporator assembly	1.0	15823100001064
12.1	evaporator inlet pipe subassembly	1.0	15223100000524
12.2	IDU coil temperature sensor(T2)	1.0	11201007003441
12.3	evaporator outlet pipe subassembly	1.0	15223100000482
16	Fan assembly	1.0	12200101000018
17	Asynchronous motor	1.0	11002015021278
19	supporter bar	1.0	12223100000665
20	Wired controller	1.0	17317100009536
25	remote controller	1.0	17317000012159
26	main water collector assembly	1.0	12123100000025
27	Water collector subassembly	1.0	12123100000026
31	Gas sensor	1.0	11201003000384
32	Copper nut	1.0	15500406000016
32	Copper nut	1.0	15500406000012

---

Due to ongoing product improvements, specifications and dimensions are subject to change and correction without notice or incurring obligations. Determining the application and suitability for use of any product is the responsibility of the installer. Additionally, the installer is responsible for verifying dimensional data on the actual product prior to beginning any installation preparations.

Incentive and rebate programs have precise requirements as to product performance and certification. All products meet applicable regulations in effect on date of manufacture; however, certifications are not necessarily granted for the life of a product. Therefore, it is the responsibility of the applicant to determine whether a specific model qualifies for these incentive/rebate programs.



1900 Wellworth Avenue • Jackson, MI 49203 • 517-787-2100

---

*Comfort-Aire*®

 **Century**®

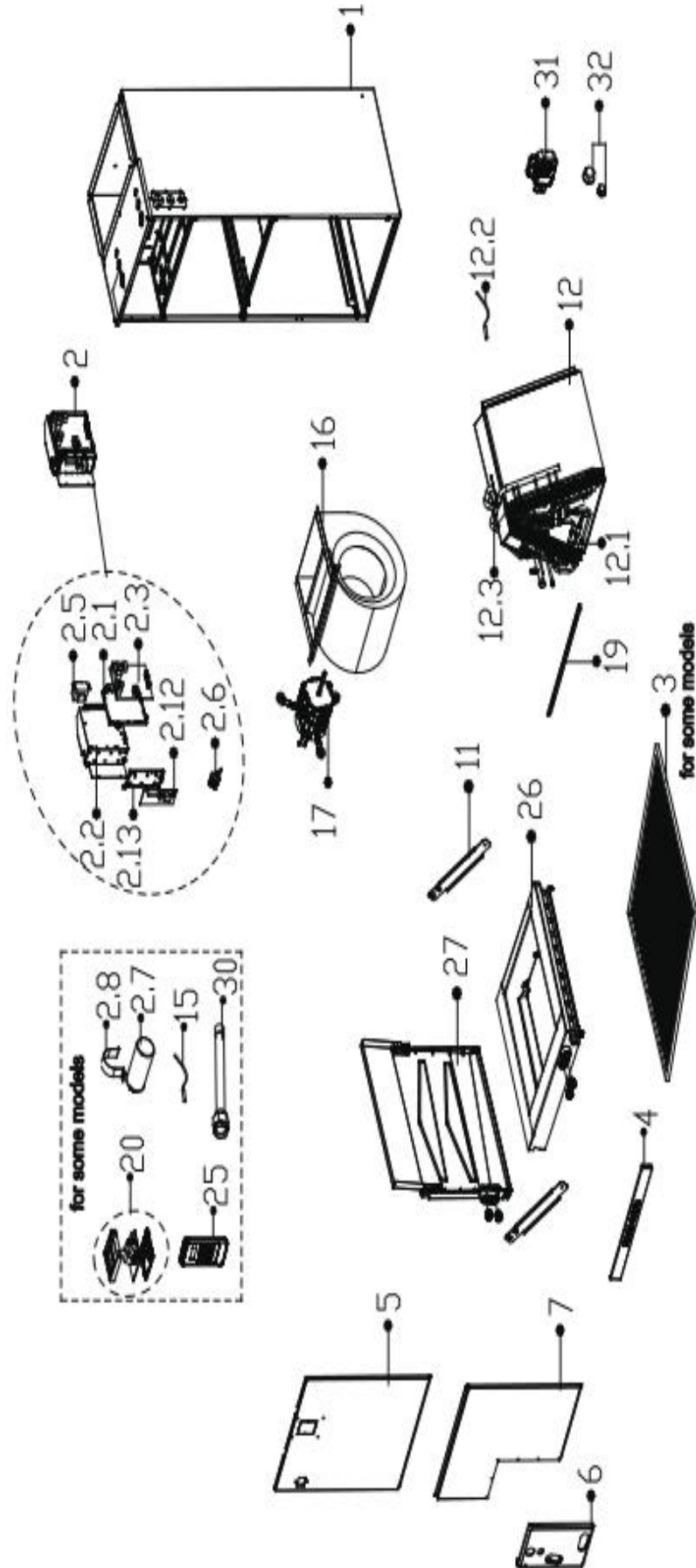
---

REPLACEMENT PARTS LIST

**MULTI-POSITION AIR HANDLER**

B-VHP24AA-1

# EXPLODED VIEW



## REPLACEMENT PARTS

Location	Part Name	Quantity	Part No.
1	Chassis assembly	1.0	12223100000893
2	Structural components of indoor electric control box	1.0	17223000012568
2.1	Electrical installation plate	1.0	12123000000920
2.2	Electric control board mounting panel Subassembly	1.0	12223100000876
2.3	main control board assembly	1.0	17123000014210
2.5	Transformer	1.0	11203103002799
2.6	Terminal block	1.0	17400401000097
2.12	Data transfer model control assembly	1.0	17122000065528
2.13	Electronic installing box	1.0	12100801000401
4	Air filter shutter	1.0	12223100000654
5	Upside board subassembly	1.0	12223100000892
6	Cover board assembly	1.0	12223100001892
7	Underside board assembly	1.0	12223100001912
11	Fixing board of water collector	2.0	12223100001471
12	evaporator assembly	1.0	15823100001065
12.1	evaporator inlet pipe subassembly	1.0	15223100000522
12.2	IDU coil temperature sensor(T2)	1.0	11201007003441
12.3	evaporator outlet pipe subassembly	1.0	15223100000501
16	Fan assembly	1.0	12200101000018
17	Asynchronous motor	1.0	11002015021278
19	supporter bar	1.0	12223100000665
20	Wired controller	1.0	17317100009536
25	remote controller	1.0	17317000012159
26	main water collector assembly	1.0	12123100000025
27	Water collector subassembly	1.0	12123100000026
31	Gas sensor	1.0	11201003000384
32	Copper nut	1.0	15500406000010
32	Copper nut	1.0	15500406000003

---

Due to ongoing product improvements, specifications and dimensions are subject to change and correction without notice or incurring obligations. Determining the application and suitability for use of any product is the responsibility of the installer. Additionally, the installer is responsible for verifying dimensional data on the actual product prior to beginning any installation preparations.

Incentive and rebate programs have precise requirements as to product performance and certification. All products meet applicable regulations in effect on date of manufacture; however, certifications are not necessarily granted for the life of a product. Therefore, it is the responsibility of the applicant to determine whether a specific model qualifies for these incentive/rebate programs.



1900 Wellworth Avenue • Jackson, MI 49203 • 517-787-2100

---

*Comfort-Aire*®

 **Century**®

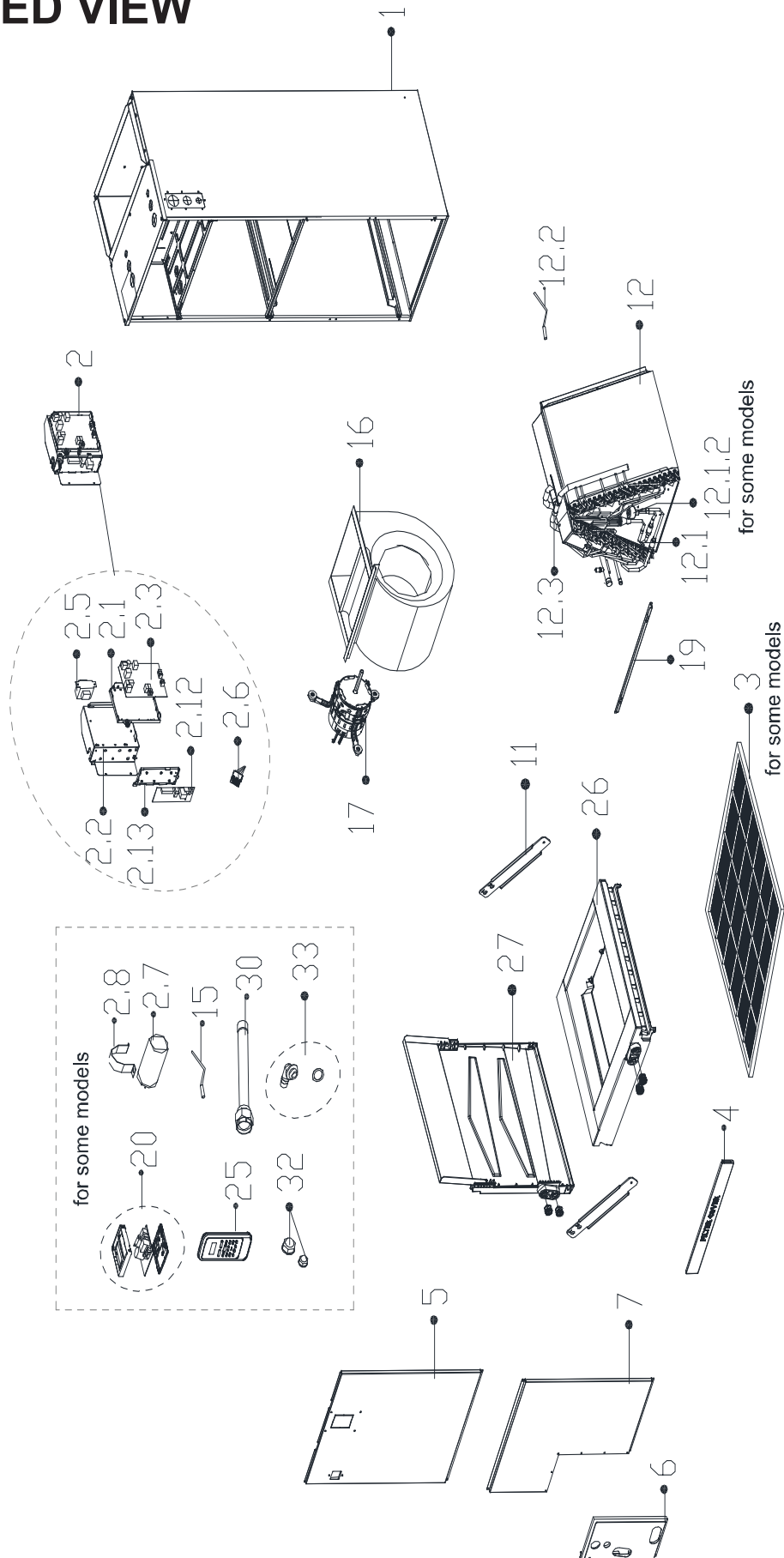
---

REPLACEMENT PARTS LIST

**MULTI-POSITION AIR HANDLER**

B-VHP30AA-1

# EXPLODED VIEW



## REPLACEMENT PARTS

Location	Part Name	Quantity	Part No.
1	Chassis assembly	1.0	12223100000879
2	Structural components of indoor electric control box	1.0	17223000012567
2.1	Electrical installation plate	1.0	12123000000920
2.2	Electric control board mounting panel Subassembly	1.0	12223100000876
2.3	main control board assembly	1.0	17123000014209
2.5	Transformer	1.0	11203103002799
2.6	Terminal block	1.0	17400401000097
2.12	Data transfer model control assembly	1.0	17122000065528
2.13	Electronic installing box	1.0	12100801000401
4	Air filter shutter	1.0	12223100000652
5	Upside board subassembly	1.0	12223100000880
6	Cover board assembly	1.0	12223100001892
7	Underside board assembly	1.0	12223100001891
11	Fixing board of water collector	2.0	12223100001471
12	evaporator assembly	1.0	15823100001085
12.1	evaporator inlet pipe subassembly	1.0	15223100000521
12.2	IDU coil temperature sensor(T2)	1.0	11201007003437
12.3	evaporator outlet pipe subassembly	1.0	15223100000481
16	Fan assembly	1.0	12200101000253
17	Asynchronous motor	1.0	11002015021277
19	supporter bar	1.0	12223100000657
20	Wired controller	1.0	17317100009536
25	remote controller	1.0	17317000012159
26	main water collector assembly	1.0	12123100000024
27	Water collector subassembly	1.0	12123100000063
30	evaporator connecting pipe subassembly	1.0	15111600A00285
31	Gas sensor	1.0	11201003000384
32	Copper nut	1.0	15500406000010
32	Copper nut	1.0	15500406000003

---

Due to ongoing product improvements, specifications and dimensions are subject to change and correction without notice or incurring obligations. Determining the application and suitability for use of any product is the responsibility of the installer. Additionally, the installer is responsible for verifying dimensional data on the actual product prior to beginning any installation preparations.

Incentive and rebate programs have precise requirements as to product performance and certification. All products meet applicable regulations in effect on date of manufacture; however, certifications are not necessarily granted for the life of a product. Therefore, it is the responsibility of the applicant to determine whether a specific model qualifies for these incentive/rebate programs.



1900 Wellworth Avenue • Jackson, MI 49203 • 517-787-2100

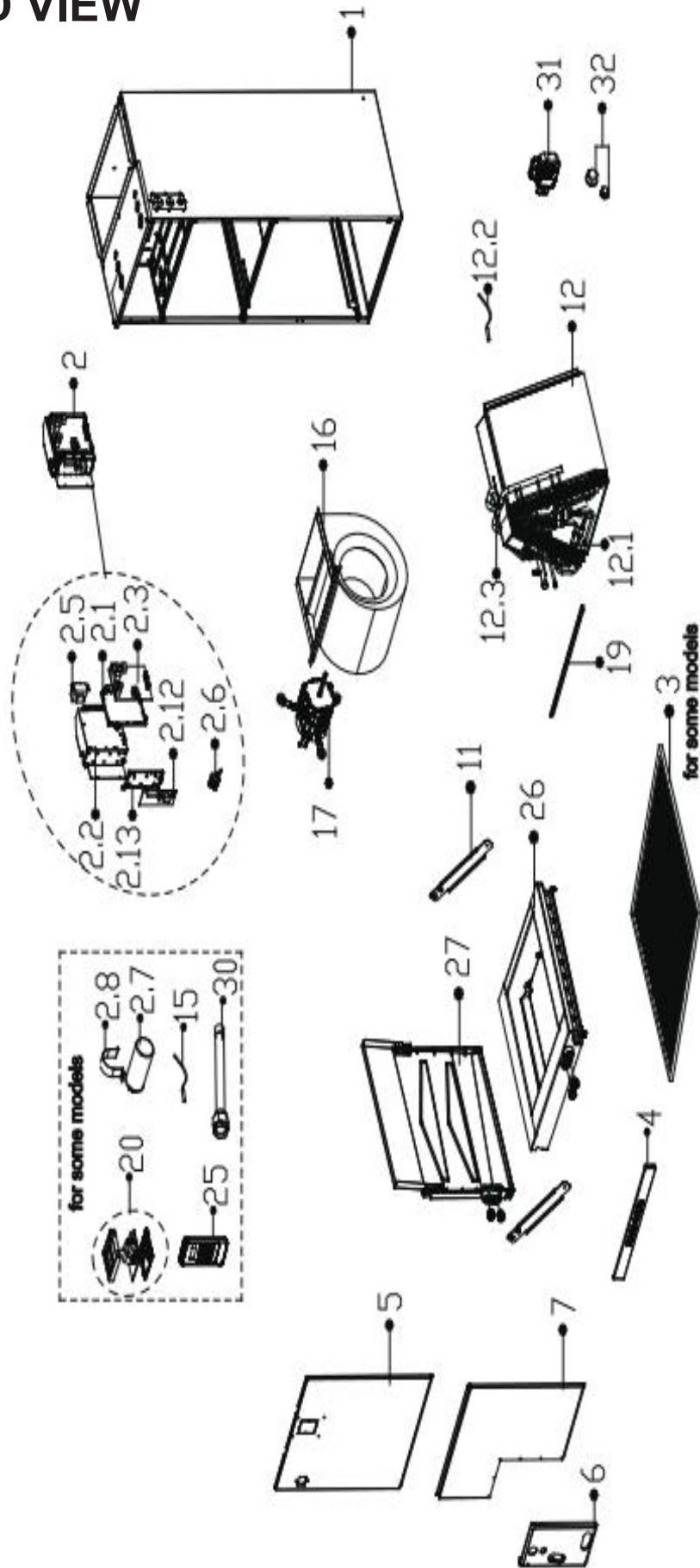


REPLACEMENT PARTS LIST

**MULTI-POSITION AIR HANDLER**

B-VHP36AA-1

# EXPLODED VIEW



## REPLACEMENT PARTS

Location	Part Name	Quantity	Part No.
1	Chassis assembly	1.0	12223100000879
2	Structural components of indoor electric control box	1.0	17223000012303
2.1	Electrical installation plate	1.0	12123000000920
2.2	Electric control board mounting panel Subassembly	1.0	12223100000876
2.3	main control board assembly	1.0	17123000013826
2.5	Transformer	1.0	11203103002799
2.6	Terminal block	1.0	17400401000085
2.12	Data transfer model control assembly	1.0	17122000066667
2.13	Electronic installing box	1.0	12100801000401
4	Air filter shutter	1.0	12223100000652
5	Upside board subassembly	1.0	12223100000880
6	Cover board assembly	1.0	12223100001892
7	Underside board assembly	1.0	12223100001891
11	Fixing board of water collector	2.0	12223100001471
12	evaporator assembly	1.0	15823100001104
12.1	evaporator inlet pipe subassembly	1.0	15223100000521
12.2	IDU coil temperature sensor(T2)	1.0	11201007003437
12.3	evaporator outlet pipe subassembly	1.0	15223000000565
16	Fan assembly	1.0	12200101000253
17	Asynchronous motor	1.0	11002015021277
19	supporter bar	1.0	12223100000657
20	Wired controller	1.0	17317100009536
25	remote controller	1.0	17317000012159
26	main water collector assembly	1.0	12123100000024
27	Water collector subassembly	1.0	12123100000063
31	Gas sensor	1.0	11201003000384
32	Copper nut	1.0	15500406000010
32	Copper nut	1.0	15500406000008

---

Due to ongoing product improvements, specifications and dimensions are subject to change and correction without notice or incurring obligations. Determining the application and suitability for use of any product is the responsibility of the installer. Additionally, the installer is responsible for verifying dimensional data on the actual product prior to beginning any installation preparations.

Incentive and rebate programs have precise requirements as to product performance and certification. All products meet applicable regulations in effect on date of manufacture; however, certifications are not necessarily granted for the life of a product. Therefore, it is the responsibility of the applicant to determine whether a specific model qualifies for these incentive/rebate programs.



1900 Wellworth Avenue • Jackson, MI 49203 • 517-787-2100