

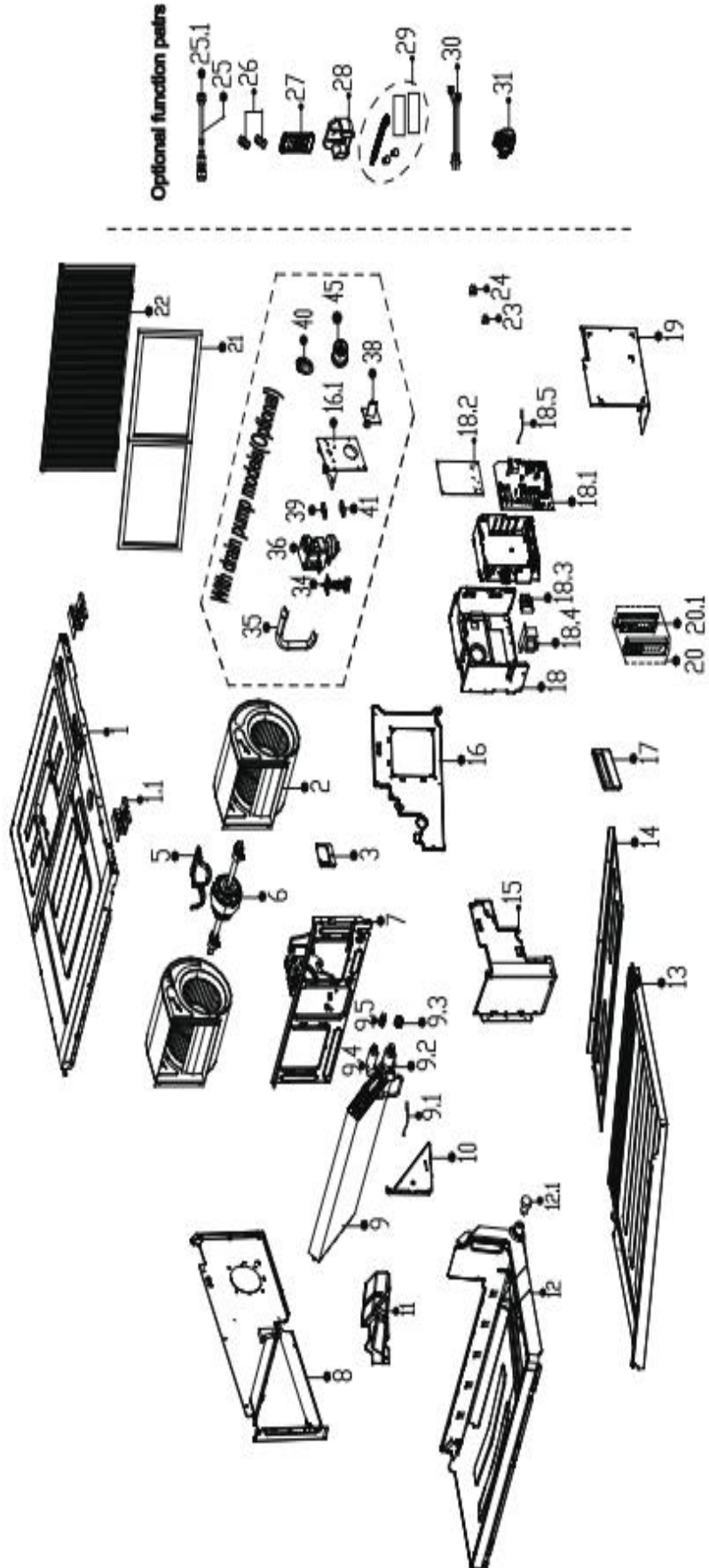


REPLACEMENT PARTS LIST

DUCTED INDOOR UNIT

B-VHP09DA-1

EXPLODED VIEW



REPLACEMENT PARTS

Location	Part Name	Quantity	Part No.
1	Chassis assembly	1.0	12223000017575
1.1	Hook	4.0	12223000016988
2	Centrifugal fan	2.0	12200101000334
3	Cover Assembly	1.0	12222200008378
5	Upper cover (left), fan motor	1.0	12223000017072
6	Asynchronous motor	1.0	11002015019436
7	middle crossbeam subassembly	1.0	12223000017576
8	left side plate subassembly	1.0	12223000017553
9	evaporator assembly	1.0	15823000007183
9.1	Pipe temperature sensor subassembly	1.0	11201007003444
9.2	evaporator outlet pipe subassembly	1.0	15123000014368
9.3	Copper nut	1.0	15500404000002
9.4	evaporator inlet pipe subassembly	1.0	15123000014028
9.5	Detection valve	1.0	15500209000001
10	evaporator right supporter board assembly	1.0	12223000017571
11	Water collector assembly	1.0	12123000003440
12	Water collector assembly	1.0	12123000003421
12.1	Rubber plug	2.0	12600801000883
13	Top cover subassembly	1.0	12223000017010
14	Rear cover subassembly	1.0	12223000017574
15	right side plate subassembly	1.0	12223000017554
16	Pipe clamp board subassembly	1.0	12223000017573
16.1	Drain pump holder subassembly	1.0	12223000017032
17	Wired controller	1.0	17317100007956
18	Structural components of indoor electric control box	1.0	17223000010663
18.1	Indoor main control board subassembly	1.0	17123000011843
18.2	Inverter module subassembly	1.0	17122000062955
18.3	Terminal block	1.0	17400401000097
18.4	Reactor	1.0	17400306000070
18.5	Ambient temperature sensor subassembly	1.0	11201007007443
19	Cover of electronic control box	1.0	12223000017050
20	New T2 air duct machine display box subassembly	1.0	17223000000003
20.1	New T2 air duct machine display board subassembly	1.0	17123000002712
21	Flange subassembly	1.0	12223000017109
22	Air filter	1.0	12223000017076
23	Copper nut	1.0	15500406000016
24	Copper nut	1.0	15500406000010
29	Accessory kit	1.0	12011600A00310
31	Gas sensor	1.0	11201003000344
34	Water level sensor	1.0	17400511001544
35	Drain pipe	1.0	12623000000294
36	Drain pump	1.0	11001012001251
38	Drain connecting pipe	1.0	12100510000021

Due to ongoing product improvements, specifications and dimensions are subject to change and correction without notice or incurring obligations. Determining the application and suitability for use of any product is the responsibility of the installer. Additionally, the installer is responsible for verifying dimensional data on the actual product prior to beginning any installation preparations.

Incentive and rebate programs have precise requirements as to product performance and certification. All products meet applicable regulations in effect on date of manufacture; however, certifications are not necessarily granted for the life of a product. Therefore, it is the responsibility of the applicant to determine whether a specific model qualifies for these incentive/rebate programs.



1900 Wellworth Avenue • Jackson, MI 49203 • 517-787-2100

Comfort-Cire®

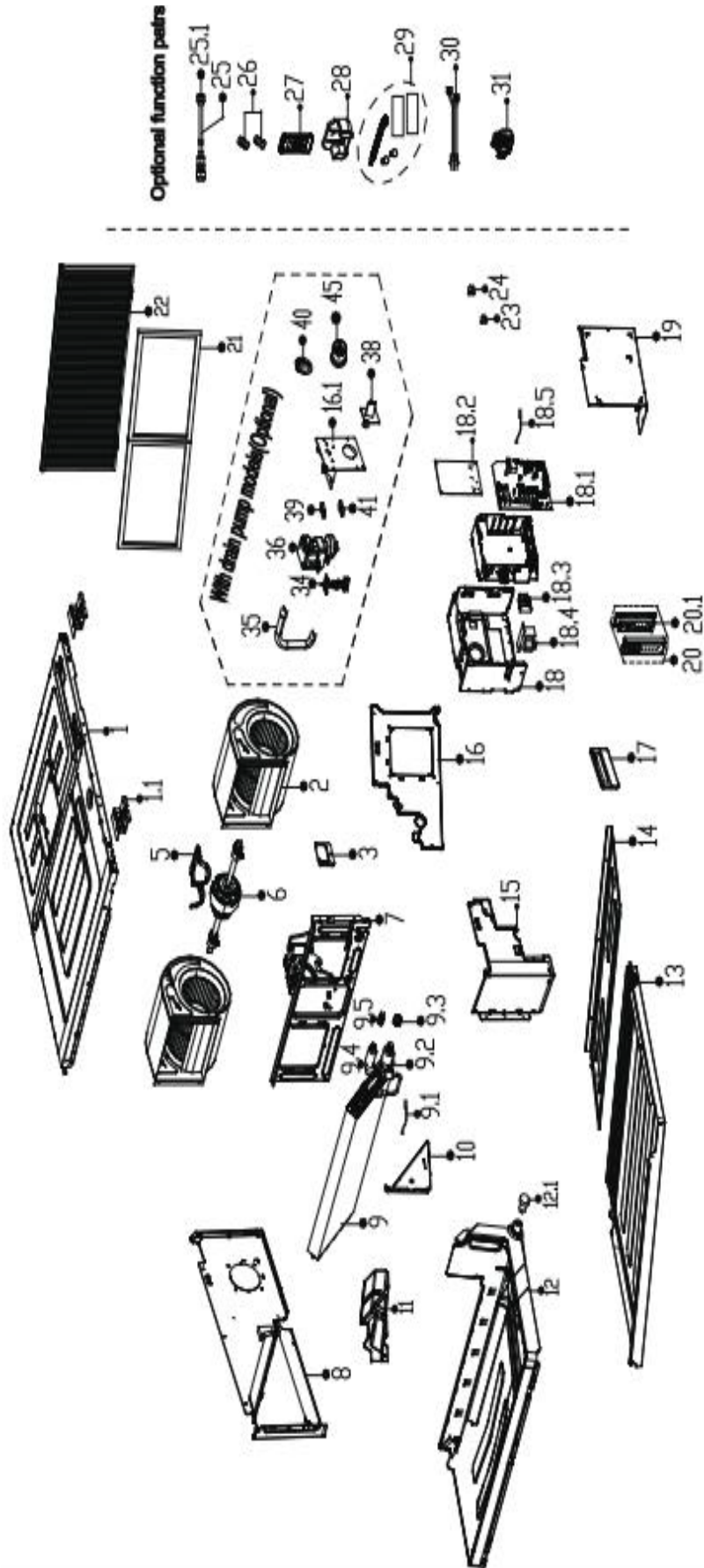
Century®

REPLACEMENT PARTS LIST

DUCTED INDOOR UNITS

B-VHP12DA-1

EXPLODED VIEW



REPLACEMENT PARTS

Location	Part Name	Quantity	Part No.
1	Chassis assembly	1.0	12223000017575
1.1	Hook	4.0	12223000016988
2	Centrifugal fan	2.0	12200101000334
3	Cover Assembly	1.0	12222200008378
5	Upper cover (left), fan motor	1.0	12223000017072
6	Asynchronous motor	1.0	11002015019436
7	middle crossbeam subassembly	1.0	12223000017576
8	left side plate subassembly	1.0	12223000017553
9	evaporator assembly	1.0	15823000007183
9.1	Pipe temperature sensor subassembly	1.0	11201007003444
9.2	evaporator outlet pipe subassembly	1.0	15123000014368
9.3	Copper nut	1.0	15500404000002
9.4	evaporator inlet pipe subassembly	1.0	15123000014028
9.5	Detection valve	1.0	15500209000001
10	evaporator right supporter board assembly	1.0	12223000017571
11	Water collector assembly	1.0	12123000003440
12	Water collector assembly	1.0	12123000003421
12.1	Rubber plug	2.0	12600801000883
13	Top cover subassembly	1.0	12223000017010
14	Rear cover subassembly	1.0	12223000017574
15	right side plate subassembly	1.0	12223000017554
16	Pipe clamp board subassembly	1.0	12223000017573
16.1	Drain pump holder subassembly	1.0	12223000017032
17	Wired controller	1.0	17317100007956
18	Structural components of indoor electric control box	1.0	17223000010646
18.1	Indoor main control board subassembly	1.0	17123000011866
18.2	Inverter module subassembly	1.0	17122000062955
18.3	Terminal block	1.0	17400401000097
18.4	Reactor	1.0	17400306000070
18.5	Ambient temperature sensor subassembly	1.0	11201007007443
19	Cover of electronic control box	1.0	12223000017050
20	New T2 air duct machine display box subassembly	1.0	17223000000003
20.1	New T2 air duct machine display board subassembly	1.0	17123000002712
21	Flange subassembly	1.0	12223000017109
22	Air filter	1.0	12223000017076
23	Copper nut	1.0	15500406000016
24	Copper nut	1.0	15500406000010
29	Accessory kit	1.0	12011600A00310
31	Gas sensor	1.0	11201003000344
34	Water level sensor	1.0	17400511001544
35	Drain pipe	1.0	12623000000294
36	Drain pump	1.0	11001012001251
38	Drain connecting pipe	1.0	12100510000021

Due to ongoing product improvements, specifications and dimensions are subject to change and correction without notice or incurring obligations. Determining the application and suitability for use of any product is the responsibility of the installer. Additionally, the installer is responsible for verifying dimensional data on the actual product prior to beginning any installation preparations.

Incentive and rebate programs have precise requirements as to product performance and certification. All products meet applicable regulations in effect on date of manufacture; however, certifications are not necessarily granted for the life of a product. Therefore, it is the responsibility of the applicant to determine whether a specific model qualifies for these incentive/rebate programs.



1900 Wellworth Avenue • Jackson, MI 49203 • 517-787-2100

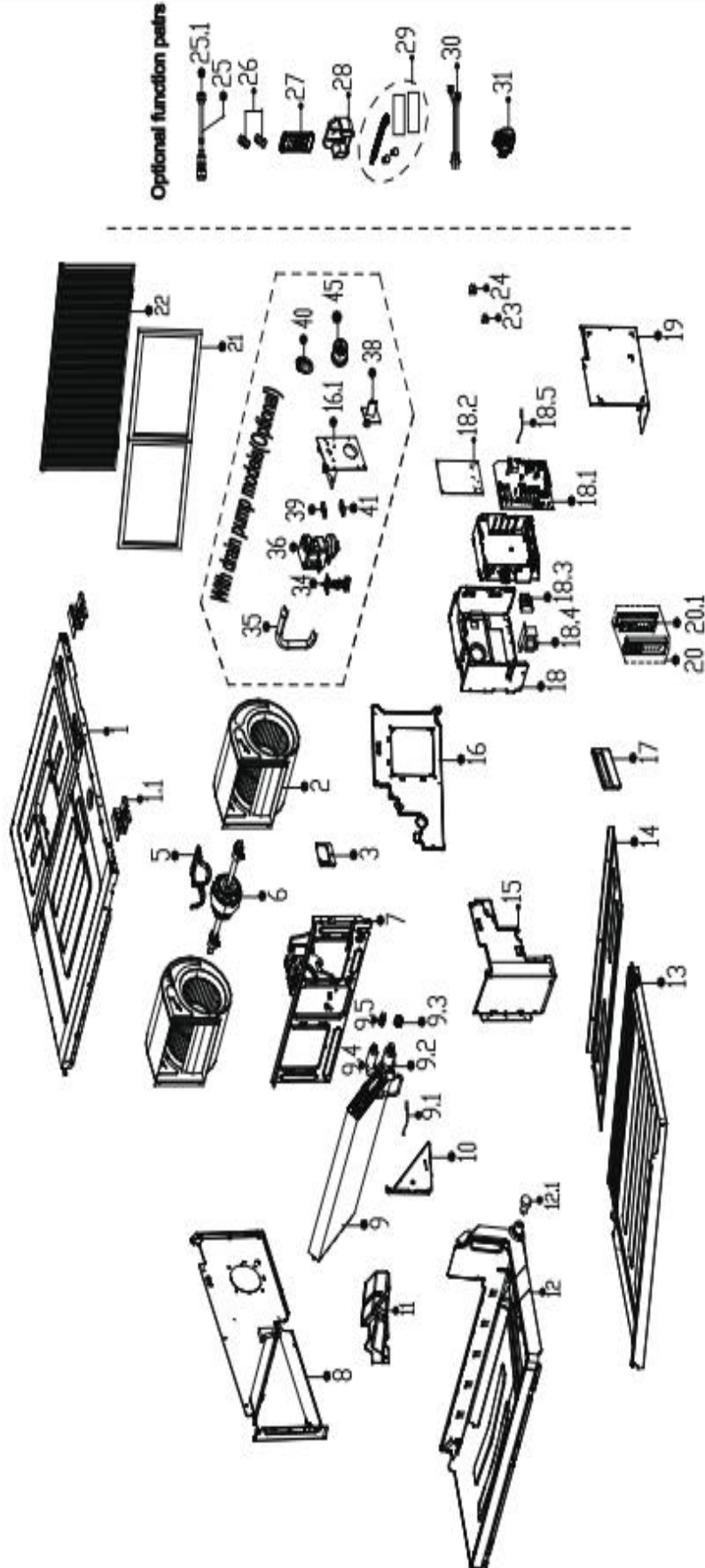


REPLACEMENT PARTS LIST

DUCTED INDOOR UNITS

B-VHP18DA-1

EXPLODED VIEW



REPLACEMENT PARTS

Location	Part Name	Quantity	Part No.
1	Chassis assembly	1.0	12223000017555
1.1	Hook	4.0	12223000016988
2	Centrifugal fan	2.0	12200101000335
3	Cover Assembly	1.0	12222200008378
5	Upper cover (left), fan motor	1.0	12223000017072
6	Asynchronous motor	1.0	11002015019436
7	middle crossbeam subassembly	1.0	12223000017552
8	left side plate subassembly	1.0	12223000017553
9	evaporator assembly	1.0	15823000007163
9.1	Pipe temperature sensor subassembly	1.0	11201007003444
9.2	evaporator outlet pipe subassembly	1.0	15123000014367
9.3	Copper nut	1.0	15500404000009
9.4	evaporator inlet pipe subassembly	1.0	15123000014387
9.5	Detection valve	1.0	15500209000001
10	evaporator right supporter board assembly	1.0	12223000017571
11	Water collector assembly	1.0	12123000003440
12	Water collector assembly	1.0	12123000003420
12.1	Rubber plug	2.0	12600801000883
13	Top cover subassembly	1.0	12223000017019
14	Rear cover subassembly	1.0	12223000017572
15	right side plate subassembly	1.0	12223000017554
16	Pipe clamp board subassembly	1.0	12223000017573
16.1	Drain pump holder subassembly	1.0	12223000017032
17	Wired controller	1.0	17317100007956
18	Structural components of indoor electric control box	1.0	17223000010645
18.1	Indoor main control board subassembly	1.0	17123000011864
18.2	Inverter module subassembly	1.0	17122000062941
18.3	Terminal block	1.0	17400401000097
18.4	Reactor	1.0	17400306000070
18.5	Ambient temperature sensor subassembly	1.0	11201007007443
19	Cover of electronic control box	1.0	12223000017050
20	New T2 air duct machine display box subassembly	1.0	17223000000003
20.1	New T2 air duct machine display board subassembly	1.0	17123000002712
21	Flange subassembly	1.0	12223000017074
22	Air filter	2.0	12223000017112
23	Copper nut	1.0	15500406000016
24	Copper nut	1.0	15500406000012
29	Accessory kit	1.0	12011600A00310
31	Gas sensor	1.0	11201003000344
34	Water level sensor	1.0	17400511001544
35	Drain pipe	1.0	12623000000294
36	Drain pump	1.0	11001012001251
38	Drain connecting pipe	1.0	12100510000021

Due to ongoing product improvements, specifications and dimensions are subject to change and correction without notice or incurring obligations. Determining the application and suitability for use of any product is the responsibility of the installer. Additionally, the installer is responsible for verifying dimensional data on the actual product prior to beginning any installation preparations.

Incentive and rebate programs have precise requirements as to product performance and certification. All products meet applicable regulations in effect on date of manufacture; however, certifications are not necessarily granted for the life of a product. Therefore, it is the responsibility of the applicant to determine whether a specific model qualifies for these incentive/rebate programs.



1900 Wellworth Avenue • Jackson, MI 49203 • 517-787-2100

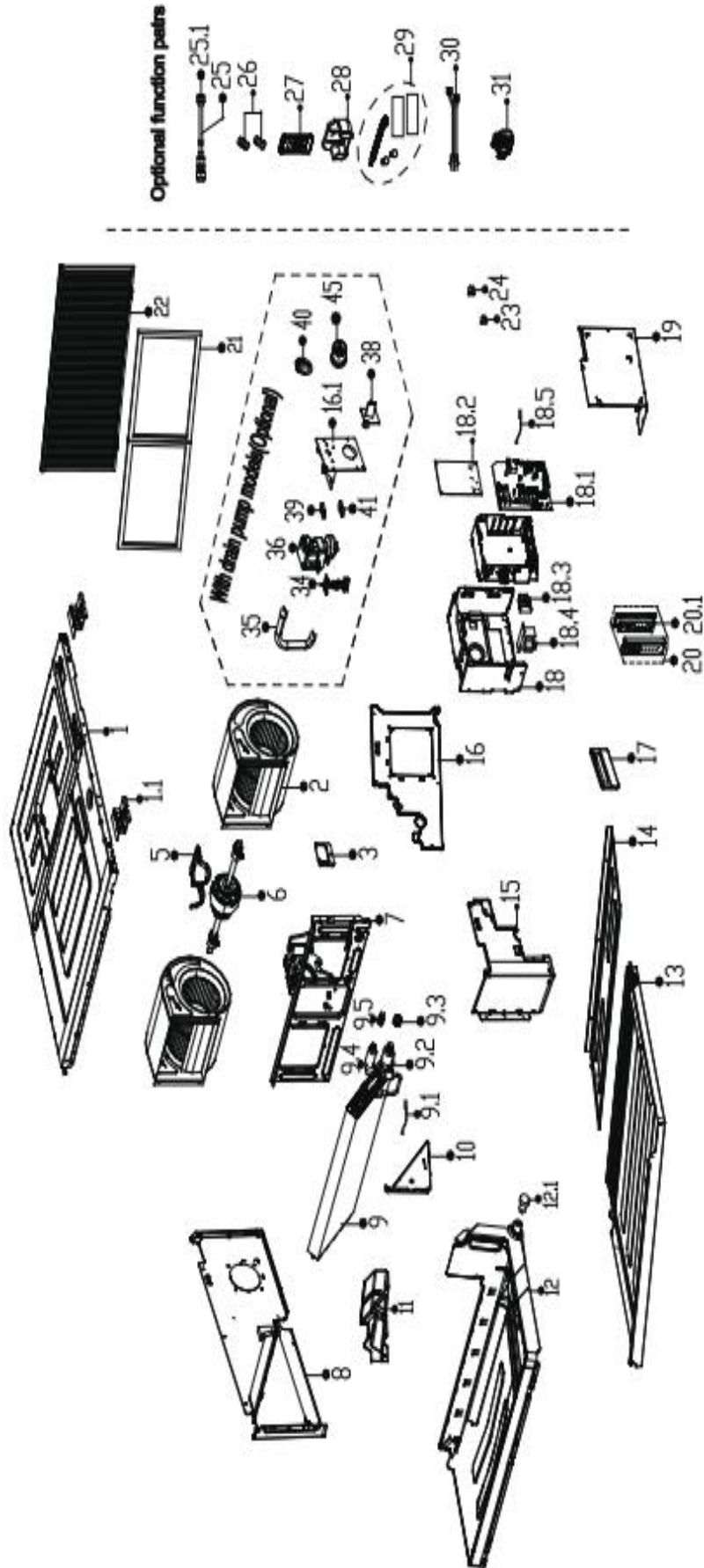


REPLACEMENT PARTS LIST

DUCTED INDOOR UNITS

B-VHP24DA-1

EXPLODED VIEW



REPLACEMENT PARTS

Location	Part Name	Quantity	Part No.
1	Chassis assembly	1.0	12223000017555
1.1	Hook	4.0	12223000016988
2	Centrifugal fan	2.0	12200101000335
3	Cover Assembly	1.0	12222200008378
5	Upper cover (left), fan motor	1.0	12223000017072
6	Asynchronous motor	1.0	11002015019436
7	middle crossbeam subassembly	1.0	12223000017552
8	left side plate subassembly	1.0	12223000017553
9	evaporator assembly	1.0	15823000006925
9.1	Pipe temperature sensor subassembly	1.0	11201007003444
9.2	evaporator outlet pipe subassembly	1.0	15123000014048
9.3	Copper nut	1.0	15500404000005
9.4	evaporator inlet pipe subassembly	1.0	15123000014047
9.5	Detection valve	1.0	15500209000002
10	evaporator right supporter board assembly	1.0	12223000017571
11	Water collector assembly	1.0	12123000003440
12	Water collector assembly	1.0	12123000003420
12.1	Rubber plug	2.0	12600801000883
13	Top cover subassembly	1.0	12223000017019
14	Rear cover subassembly	1.0	12223000017572
15	right side plate subassembly	1.0	12223000017554
16	Pipe clamp board subassembly	1.0	12223000017573
16.1	Drain pump holder subassembly	1.0	12223000017032
17	Wired controller	1.0	17317100007956
18	Structural components of indoor electric control box	1.0	17223000010662
18.1	Indoor main control board subassembly	1.0	17123000011862
18.2	Inverter module subassembly	1.0	17122000062941
18.3	Terminal block	1.0	17400401000097
18.4	Reactor	1.0	17400306000070
18.5	Ambient temperature sensor subassembly	1.0	11201007007443
19	Cover of electronic control box	1.0	12223000017050
20	New T2 air duct machine display box subassembly	1.0	17223000000003
20.1	New T2 air duct machine display board subassembly	1.0	17123000002712
21	Flange subassembly	1.0	12223000017074
22	Air filter	2.0	12223000017112
23	Copper nut	1.0	15500406000010
24	Copper nut	1.0	15500406000003
29	Accessory kit	1.0	12011600A00310
31	Gas sensor	1.0	11201003000344
34	Water level sensor	1.0	17400511001544
35	Drain pipe	1.0	12623000000294
36	Drain pump	1.0	11001012001251
38	Drain connecting pipe	1.0	12100510000021

Due to ongoing product improvements, specifications and dimensions are subject to change and correction without notice or incurring obligations. Determining the application and suitability for use of any product is the responsibility of the installer. Additionally, the installer is responsible for verifying dimensional data on the actual product prior to beginning any installation preparations.

Incentive and rebate programs have precise requirements as to product performance and certification. All products meet applicable regulations in effect on date of manufacture; however, certifications are not necessarily granted for the life of a product.

Therefore, it is the responsibility of the applicant to determine whether a specific model qualifies for these incentive/rebate programs.



1900 Wellworth Avenue • Jackson, MI 49203 • 517-787-2100