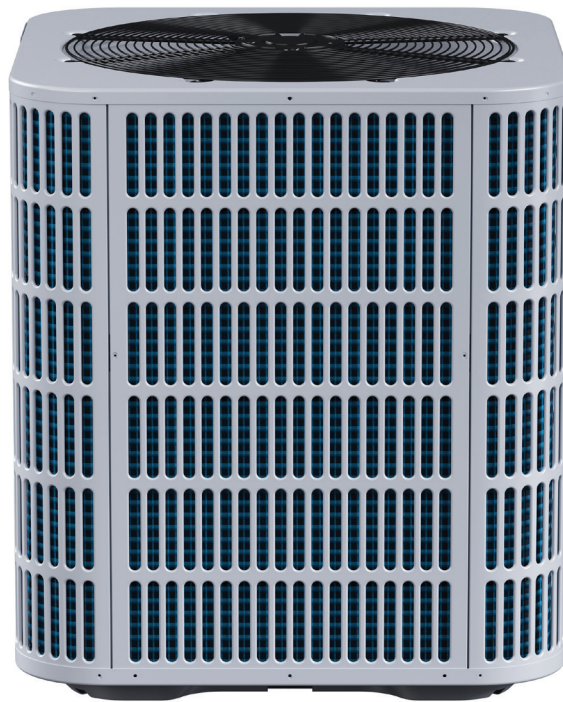
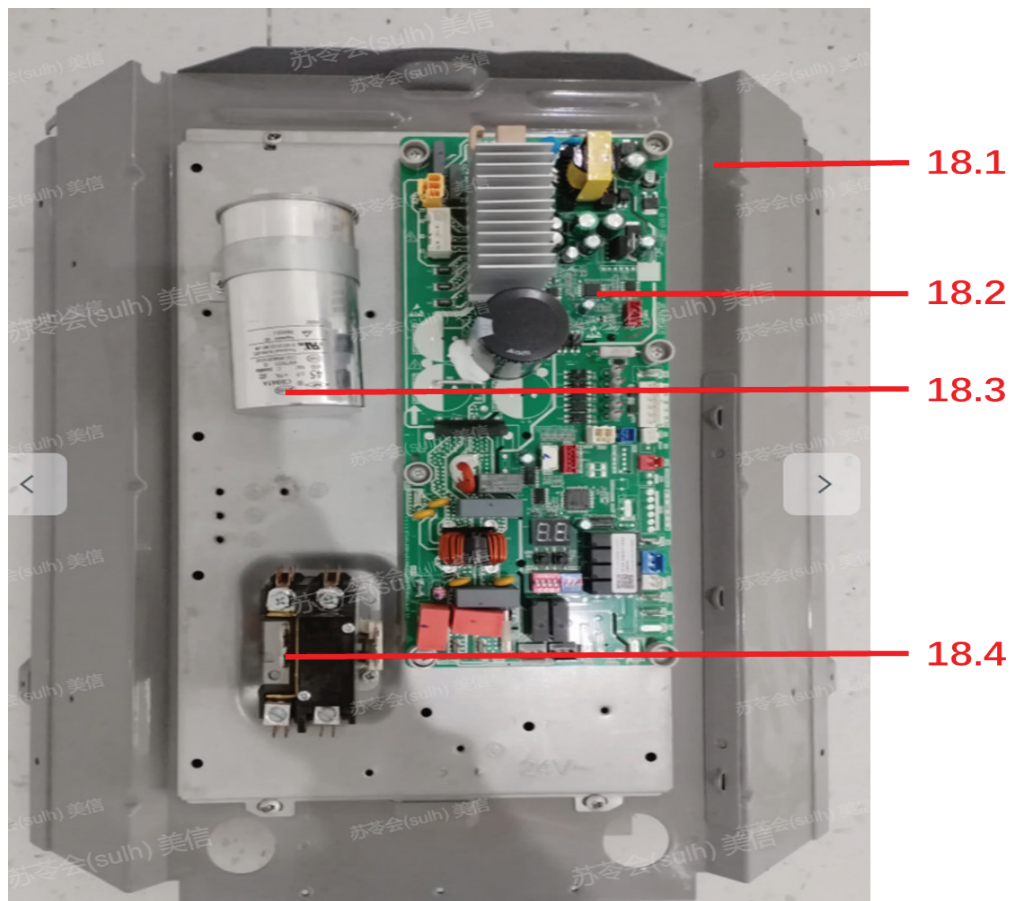
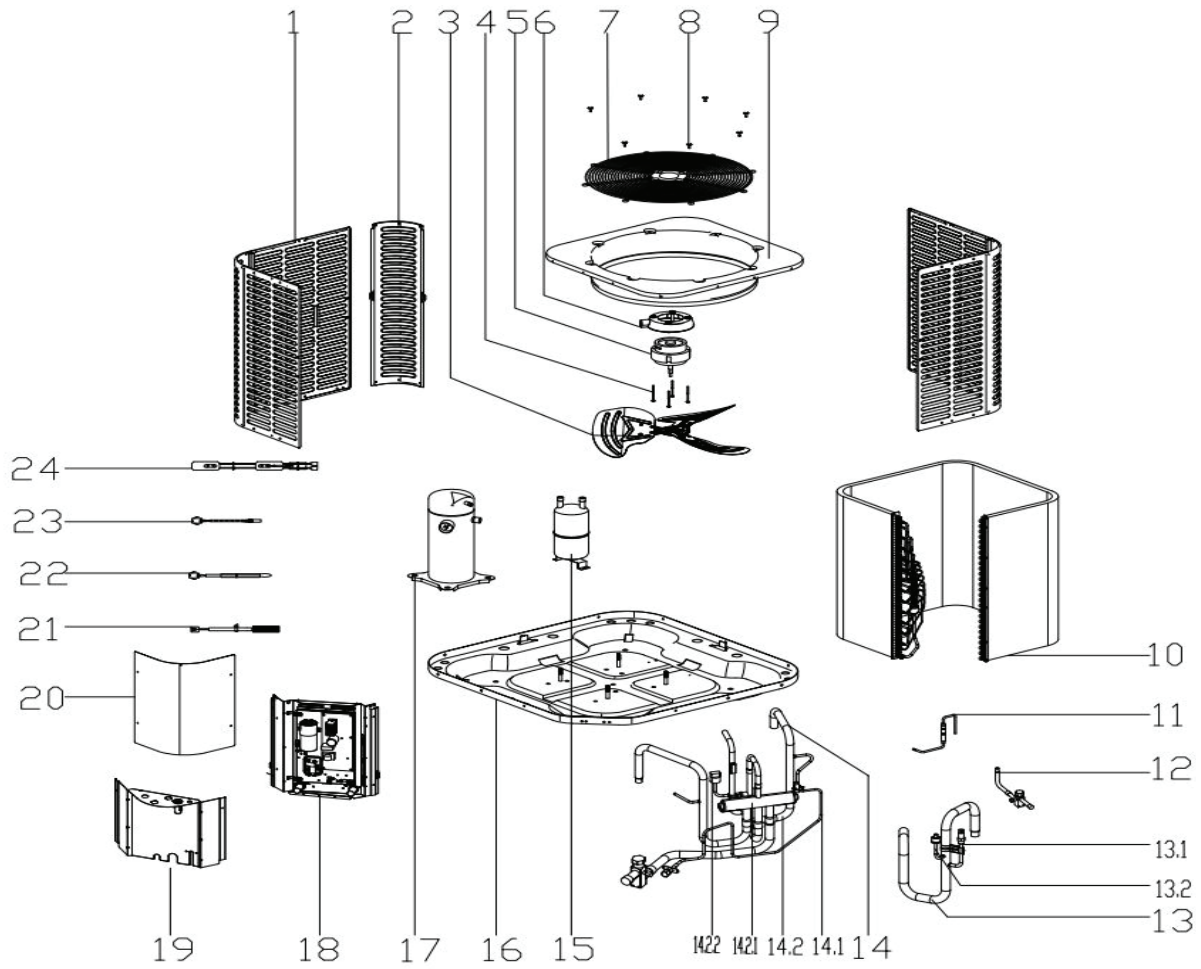

Comfort-Cire® **Century**®
SE Series

Split System Heat Pump

SHP1442S1A
Parts List





EX_ID	Spare Parts Code	Part Name(EN)	Qty.
1	12223000A03410	Side panel assembly	2
2	12223000002572	Side panel assembly	3
3	12200104000032	Axial Flow Fan	1
4	11301805000012	Motor Mounting Bolt	4
5	11002015020572	Brushless DC Motor	1
6	12123000000464	Motor Mounting Plate	1
7	12923000000028	Grille	1
8	11301002000001	Hexagon Head Bolt And Washer	8
9	12223000001097	Top Cover Assembly	1
10	15823000004429	Condenser Assembly	1
11	15423000006078	Throttle assembly	1
12	15423000003178	High Pressure Valve Assembly	1
13	15423000006060	Suction pipe ass'y	1
13.1	15427000007112	Fusible plug assembly	1
13.2	17400516001308	Pressure switch	1
14	15423000006081	4-way valve ass'y	1
14.1	15123000010937	Schrader Valve Assembly	1
14.2	15423000006070	4-way valve assembly	1
14.2.1	15500216002943	Four-Way Valve	1
14.2.2	17400516001309	Pressure switch	1
15	15500508001115	Liquid-Storage Tank	1
16	12223000005895	Chassis Assembly	1
17	11102010002098	Fixed Speed Scroll compressor	1
18	17223000011009	E-part box assembly	1
18.1	12223000018130	Installation plate of electric parts subassembly	1
18.2	17123000011980	Outdoor Main Control Board Assembly	1
18.3	17400103000150	Compressor Capacitor	1
18.4	11203502000032	AC Contactor	1
19	12223000016090	Side Panel Assembly	1
20	12223000A05994	Side Panel Assembly	1
21	17400513006835	Discharge Temperature switch	1
22	11201007003446	Room Temperature Sensor	1
23	11201007005723	Pipe Temperature Sensor	1
24	17402001000040	Compressor Crankcase Electric Heater	1
25	12223000A03411	Side panel assembly	2

Due to ongoing product improvements, specifications and dimensions are subject to change and correction without notice or incurring obligations. Determining the application and suitability for use of any product is the responsibility of the installer. Additionally, the installer is responsible for verifying dimensional data on the actual product prior to beginning any installation preparations.

Incentive and rebate programs have precise requirements as to product performance and certification. All products meet applicable regulations in effect on date of manufacture; however, certifications are not necessarily granted for the life of a product. Therefore, it is the responsibility of the applicant to determine whether a specific model qualifies for these incentive/rebate programs.



1900 Wellworth Avenue • Jackson, MI 49203 • 517-787-2100